

Simultaneous Alpha/Beta Sample Counter: M3030 (Dual Counter).



This Model 3030-2 is a dual-counter designed for simultaneous alpha and beta sample measurements. The instrument allows the count to be displayed in units of counts per minute (CPM), Becquerel (Bq), or counts per second (CPS). In order to do this, the status light for overload (OL) is changed to a green indicator, and the overload condition is instead displayed as "OL" on both LCD displays. The final change is that, when placed into Bq or CPS units, the alpha and beta LCD displays are changed to having a 2nd decimal point, ie. in the format xxx.x to allow for lower level measurements.

A PC interface software allows to perform setup and calibration routines including: background subtract, crosstalk correction, cpm/dpm modes, daily QC check parameters, alarm levels, and automatic plateaus. All parameters are stored in the instrument in non-volatile memory. The supplied software is capable of logging and storing the following: Sample Number, Sample Date, Sample Time, Alpha Count, Beta Count, Sample Type, Comments.

Specifications

INDICATED USE: dual-channel simultaneous alpha beta sample measurement

DETECTOR: ZnS(Ag) adhered to plastic scintillation material

TUBE: 5.1 cm (2 in.) diameter magnetically shielded photomultiplier

CONNECTOR: series "C" for connection to an external counter

WINDOW: 0.4 mg/cm² metalized polyester

ACTIVE and OPEN AREA: 20.3 cm²

EFFICIENCY (4π):

alpha: 32% for ²³⁰Th; 39% for ²³⁸U; 37% for ²³⁹Pu

beta: 8% for ¹⁴C; 27% for ⁹⁹Tc; 29% for ¹³⁷Cs; 26% for ⁹⁰Sr/⁹⁰Y

CROSS TALK:

alpha to beta: 10% or less

beta to alpha: 1% or less

BACKGROUND:

alpha: 3 cpm or less

beta gamma: typically 50 cpm or less (10 µR/hr field)

AUDIO: dual tone (one for each channel), "click-per-event" type with volume control

STATUS INDICATORS:

(QC) backlit indicators for QC-daily check needed

(OL) overload condition LCD will toggle between current reading and OL on both alpha and beta displays

counting in Becquerel (Bq) or counts per second (CPS)

count has exceeded alpha alarm set point (αAL)

count has exceeded beta alarm set point (βAL)

AUDIO: dual tone (one for each channel), "click-per-event" type with volume control

SAMPLE HOLDER: brass housing with chrome-plated brass sample tray capable of holding a 2.5 cm (1 in.) or 5.1 cm (2 in.) diameter sample up to 1.02 cm (0.4 in.) thick

SCALERS: two each (one per channel), six-digit LCD displays with backlights providing a range of 0–999999 counts

SCALER LINEARITY: reading within 2% of true value

COUNT TIMER SETTINGS: 0.1, 0.5, 1, 2, 5, 10, 60 minutes or the user-defined PC setting defined during setup using the RS-232 port. User-defined count time may be set from 0.1 to 546.1 minutes.

HIGH VOLTAGE: adjustable from 200–2500 volts

THRESHOLDS: alpha: -120 mV; beta: -4 mV; beta window: 50 mV (or -50 mV?)

DATA OUTPUT: 9-pin RS-232 port for connection to PC for data download and adjustment of detup parameters. A one meter RS-232 to USB adapter cable is included. PC interface software is available for download on our website.

POWER: 250 watts at 95–250 Vac, 50–60 Hz single phase; internal 12 Vdc, 1.2A/hr, trickle- charged battery provides power up to eight hours

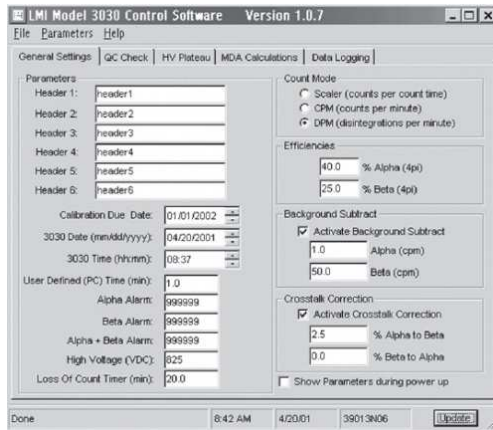
CONSTRUCTION: aluminum housing with gray powder-coat paint and sub-surface printed membrane front panel

TEMPERATURE RANGE: -20 to 50 °C (-4 to 122 °F)

SIZE: 27 x 18.5 x 26.7 cm (10.2 x 7.3 x 10.5 in.) (H x W x D)

WEIGHT: approximately 13.2 kg (29 lb)

Software GUI



Also Available

- Single Channel Simultaneous Alpha/Beta sample counter (same detector type)
- Single Channel Simultaneous Alpha/Beta sample counter (PIPS detector) for Ultra Low Alpha/Beta Crossover & Background



YOUR PARTNER FOR ALL NUCLEAR MEASUREMENT
DEVICES AND ACCESSORIES

+32 (0) 69 64 06 04

WWW.SCANNIX.COM

INFO@SCANNIX.COM