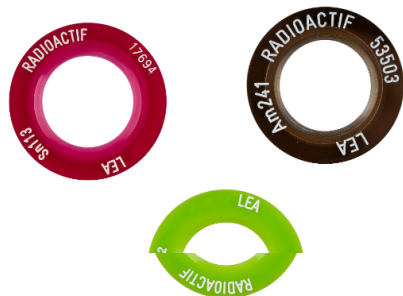


Gamma Calibration Disc Sources

[Home](#) / [Calibration Sources & Radioactive Standards](#) / [Gamma Calibration Point Sources](#)



Gamma Calibration Point Sources

- Radionuclides are placed between 2 hot-sealed polyester foils, then mounted in a snap-fit plexiglass ring.
- Available activity Levels: 0.11 uCi, 1.1 uCi, 11 uCi and 19 uCi
- Available Radionuclides: Am-241, Ba-133, Co-57, Co-60, Cs-137, Eu-152, Na-22, Y-88

[Contact Your Distributor](#)

Share This Product



Related products



Beta Calibration Point Sources



Alpha Calibration Point Sources

Find your local distributor today!

[FIND DISTRIBUTOR](#)

p: (208) 524-5300

[Distributor Login](#)

e: sales@radqual.com

© 2022 RadQual Global Services