



VIEW OUR RADIATION-SHIELDING SOLUTIONS

On this page you will find our product range for nuclear medicine & radiopharmacy. We display these products well structured, clearly visualized and complemented with product sheets. It will give you a comprehensive insight in the radiation-shielding solutions we offer.

Home > Products > Nuclear medicine & radiopharmacy > Hot lab furniture and accessories > Shielded laboratory furniture > Table top barriers

NUCLEAR MEDICINE & RADIOPHARMACY

→ Radiopharmaceutical production & research

→ Shielded hoods

→ Compact technetium solution

→ Shielded glove box

→ Hot lab furniture and accessories

→ Isotope storage safes

→ Isotope work stations

→ Lead bricks

→ Personal protection

→ Phantoms

→ Shielded laboratory furniture

Laboratory tables

Shielded pass-through hatch

Shielded supplier pass-through hatch

Table top barriers

→ Shielded waste containers

→ Transport carts

RADIOPHARMACEUTICAL PACKAGING

→ Type A packaging

→ Lead shipping containers

TABLE TOP BARRIERS

- Ideal for working on non shielded tabletops
- Available in multiple lead thicknesses
- Optimal view at the working surface through the lead glass window

Table top barrier

The barrier is made of 5, 10, 20, 30 or 50 mm lead covered in steel. Dimensions are 360*430 mm [W*D], the height is depending on the model. The lead glass window is mounted at an angle of 45° for an optimal view on the work area. The lead glass window has the same lead equivalent as the lead shielding with a density of 5.2 g/cm³. Lead glass dimensions are 350*280 mm [W*H]. The table top barrier can easily be placed on a work table. The smooth oyster white (RAL 1013) finish ensures easy cleaning.

Model VG-TTB-5
5 mm lead shielding, 140 Kev, height is 458 mm, weight ± 32 kg

Model VG-TTB-10
10 mm lead shielding, 140 KeV, height is 475 mm, weight ± 56 kg

Model VG-TTB-20
20 mm lead shielding, 364 KeV, height is 490 mm, weight ± 92 kg

Model VG-TTB-30
30 mm lead shielding, 364 KeV, height is 502 mm, weight ± 132 kg

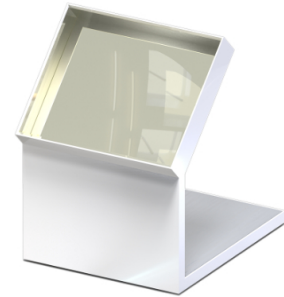
Model VG-TTB-50
50 mm lead shielding, 511 KeV, height is 520 mm, weight ± 188 kg
Lead glass dimensions: 350*250 mm [W*H]
Barrier dimensions: 360*400*520 mm [W*D*H]

Acrylic glass table top barrier (beta)

For beta radiation applications the table top barrier is completely made of acrylic glass. Dimensions are 360*430*460 mm [W*D*H].

Model VG-TTB-PG-5
5 mm acrylic glass

Model VG-TTB-PG-10
10 mm acrylic glass



GET IN TOUCH

Contact Us →

SERVICES & PRODUCTS

Nuclear medicine & radiopharmacy
Radiopharmaceutical packaging
Partner in tailor-made solutions
Lead precision

Products →

VON GAHLEN FOR SURE

This is Von Gahlen
State-of-the-art customization
Lifecycle optimization services
Safety and quality

Sign up to our newsletter



VON GAHLEN NOW

Trade fairs and News
References
Careers at Von Gahlen
Contact

Follow us online

