

Flangeless Deluxe Jaszczak Phantom™

Model ECT/FL-DLX/P

Deluxe ECT phantom without protruding flange to simplify positioning.

Main Applications

- For use with high spatial resolution SPECT and PET systems*
- System performance evaluation (collimator, artifacts, calibration, reconstruction parameters)
- Acceptance testing
- Routine quality assurance and control
- Evaluation of center-of-rotation error
- Evaluation of non-uniformity artifact
- Evaluation of changes of radius-of-rotation on spatial resolution
- Evaluation of reconstruction filters on spatial resolution
- Evaluation of attenuation and scatter compensation
- Research
- ACR recommended phantom

Specifications of Cylinder

All clear material: PMMA

Cylinder inside diameter: ~ 209 mm

Cylinder inside height: ~ 186 mm

Cylinder wall thickness: ~ 6.4 mm

Volume – Empty: ~6.3 liters

Volume – with cold rod insert: ~ 5.5 liters

Volume with PET Lid & no insert: ~ 6.2 liters

Spheres make no significant change in volume

**PET Lid available. See Flangeless Esser PET Phantom with fillable cylinders mounted to face plate.*

***For more details see Cold Rod Inserts*

Specifications of Insert and Spheres

All clear material: PMMA

Rod diameters: 4.8, 6.4, 7.9, 9.5, 11.1 and 12.7 mm**

Height of rods: 8.8 cm

Solid sphere diameters: 9.5, 12.7, 15.9, 19.1, 25.4 and 31.8 mm

Height of center of spheres from base plate: 12.7 cm

Filler Caps: 7/16 - 20 x 38.1 mm long

Shipping

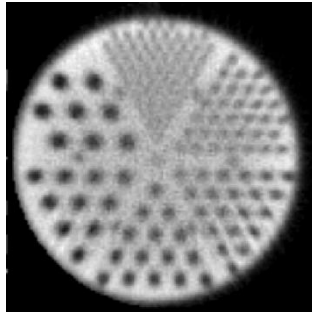
Carton: 13" x 13" x 13"

Weight: 10lbs.

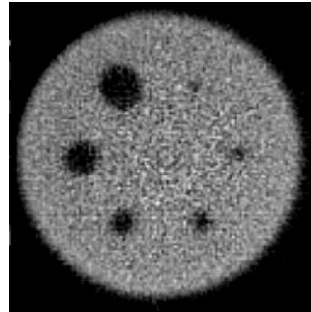


Flangeless Deluxe Jaszczak Phantom™

Cold Rods

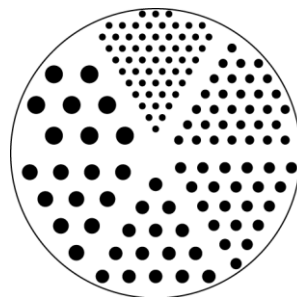


Cold Spheres

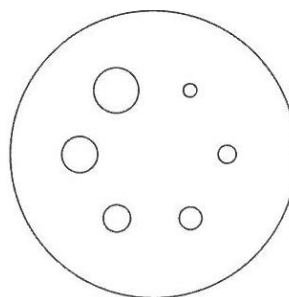


*The images were obtained with the
Flangeless Deluxe Jaszczak Phantom™*

Cold Rods



Cold Spheres



View from face plate