

Features

- ✓ Portable mapping platform with detector mount
- ✓ Rapidly map large indoor areas
- ✓ Start mapping within minutes
- ✓ Integration with existing H3D detectors and tools
- ✓ Real-time map view of radiation hot spots
- ✓ Quantify source strength and map dose rates
- ✓ User-friendly control and visualization interface
- ✓ Supports full 3D detector motion and quantification dwell measurements
- ✓ Import and align 3D map with existing point clouds
- ✓ Image to surfaces, volumes, or all space
- ✓ Wireless or Ethernet communication
- ✓ Powerful post-processing software for detailed analysis
- ✓ Integrates state-of-the-art odometry sensors
- ✓ Swapable batteries for extended operation
- ✓ Option for GPS-sensor addition for large-area outdoor mapping
- ✓ Full spectroscopic and isotope ID capabilities of H3D detector preserved

GammAware is an add-on to H3D imagers to perform Simultaneous Localization and Mapping (SLAM). Now you can create 3D radiation images by moving around with your detector. Virtually navigate around the resulting map to see radiation maps and radiation hot spots in a 3D model of the scanned area.



New capabilities can be unlocked, such as:

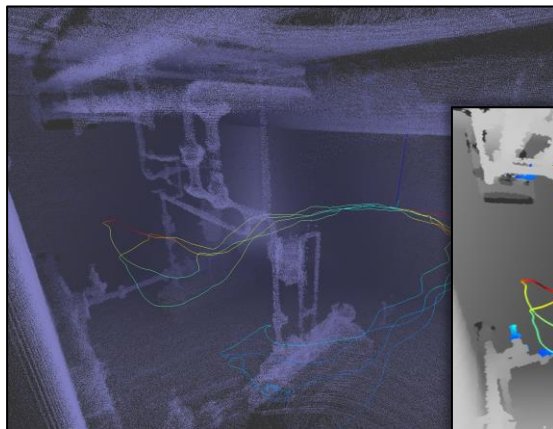
- Improved source-term maps and dose-rate visualization tools
- Shielding evaluations
- Time-motion ALARA dose estimations
- Accurate characterization for waste shipments and storage

GammAware can utilize existing H3D gamma-ray imaging systems:

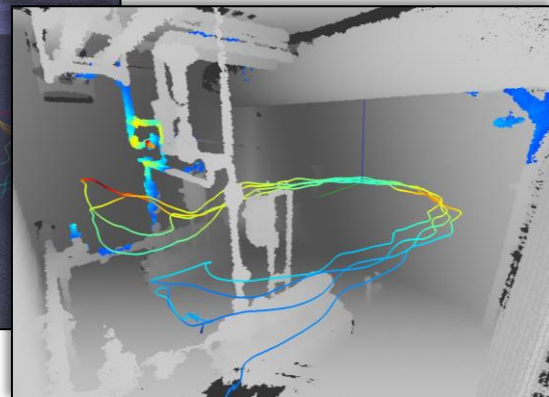
- H Series
- M Series

Contact H3D to obtain a solution for your application.

Fly through and view the 3D detector path colored by dose rate...



...and view the 3D radiation image projected onto the surfaces in the room.





GammAware with H420



GammAware with H420

GammAware Nominal Specifications

Custom features also available.

Dimensions (H version): 15 in x 8 in x 17 in with detector
(38 cm x 20 cm x 43 cm)

Weight (H version): 20 lbs (9.1 kg) with detector

Ingress Protection (target): IP67

Battery Life: 1.5 hr with continuous mapping (swapable battery)

Power Input: 15-24 V, <70 W (continuous mapping)

Startup & Operating Temp.: -20° C to 50° C (-4° F to 122° F)

Startup Time: <60 s

Radiation Detector Module: H3D's H100, H400, H420, M100, or M400

Radiation Imaging Modes: As supported on radiation detector module

Movement Modes: Full 3D motion
Stop and dwell, retaining relative 3D position

Realtime Views: 2D map
2D path colored by dose rate
2D isotope-specific radiation hot spots

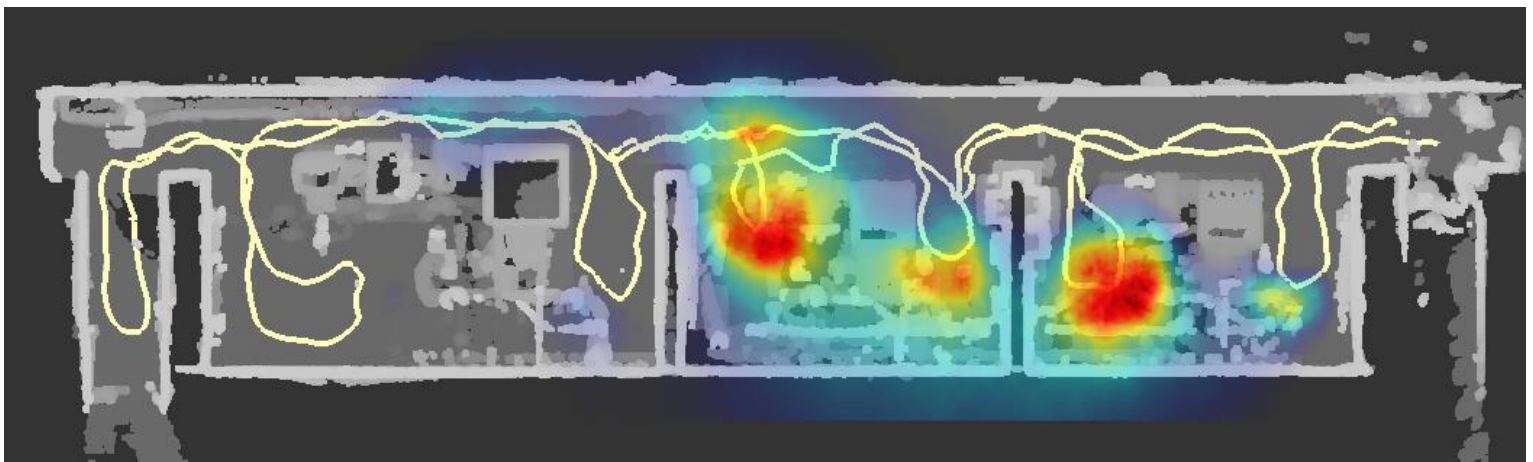
Post-Processing Views: 3D point cloud
3D path colored by dose rate
3D isotope-specific image to surfaces, volumes, or all space
Activity quantification, with input of material geometry

Communication Options: Ethernet or Wifi
Display: 8" 1280-800 HD tablet

Includes: 1-year license to Visualizer 3D software for post processing
Tablet
Power-accessory cables
Transport and storage case

Warranty: 2 years (includes annual sensor alignment and software updates)

Optional Add-Ons: GPS sensor (M version only)
Coded aperture imaging (M version only)



3-minute measurement of three charging pump cubicles



H3D®, Inc. • 812 Avis Drive • Ann Arbor, MI 48108 • USA

Tel +1 734-661-6416 • sales@h3dgamma.com • www.h3dgamma.com

© 2023-2024 H3D, Inc. All Rights Reserved. GammAware and related systems patent protected by:
U.S. Pat No. 7,411,197 & U.S. Pat No. 7,692,155 under license from the University of Michigan, and U.S. Pat
No. 10,032,264 & U.S. Pat No. 11,539,936..

Specifications, descriptions and images contained in this document were in effect at time of publication. H3D,
Inc. reserves the right to change specifications or discontinue products without notice or obligation.

All names, logos, and products herein are trademarks of their respective companies.